



## Task Force SAFE

### Objective

The objective of this service contract is for the Contractor to provide technical services including, but not limited to inspections, assessments, repairs, testing, reports, training for facilities, and operations-related projects.

### Definitions

- **LHS Electrical Deficiency:** A deficiency that is in its current state likely to bring harm or damage.
- **Imminent LHS Electrical Deficiency is defined as:** A deficiency that is in its current state is certain to bring harm or damage.
- **Mitigated is defined as:** The action of reducing an Imminent LHS deficiency.
- **RAC – Risk Assessment Code:** To provide insight for safety personnel the severity of identified deficiencies if left as found and is meant for information purposes only.
- **RAC 1:** Immediate danger to public or property with critical to catastrophic consequences.
- **RAC 2:** Possible danger to public or property with significant to minor consequences.

### Workflow

1. Inspections will be performed from source to end users.
2. When a deficiency is identified, it will always be documented, at that point and time it was found.
3. If a deficiency is found it will never be left in its current unsafe condition. A deficiency will either be repaired or mitigated.
4. Mitigating actions could include, but are not limited to, isolating the supply, posting warning signs and/or barriers or even just making the site aware of the risk.
5. On recording any deficiency, it will be recorded at the status as to which it was initially inspected.
6. Actions have been put in place by TFS, in order to allow a true reflection of the condition of all inspected electrical systems and facilities.

### Closing Summary

The inspection report provides a simple engineering view of a facilities electrical safety condition where it can continue to be used safely, along with all LHS deficiencies being highlighted in accordance with the general scope of the TF SAFE contract. This medium can supply a brief insight to the possible risk factors in and around a specific location within the AOR either CENTCOM wide or locally for the commander at a specific FOB. The TFS team can provide specialist knowledge and experience to assist in reducing the overall risk.

**Inspection-Report\_TFSAFE\_Full\_ALQ26\_SDP-2-1-E\_113\_10-06-26\_1-8**

<b>Base Location</b>	Al Quwayrah	<b>Date:</b>	10-JUN-2026
<b>Base Code</b>	ALQ26	<b>Team #:</b>	113
<b>Building #</b>	SDP-2-1-E	<b>System Voltage</b>	230/400
<b>Building Type</b>	SDP	<b>Inspection Phase</b>	Full Inspection
<b>Previous Report #:</b>	N/A	<b>Work Order:</b>	TFS-ALQ26-2026-00008

**Physical Building Location Description:**

Located behind reefer units on the northeast perimeter.

**Overall Building Electrical System:** Poor

**Building Picture:****Deficiencies (8):**

<b>Deficiency #1</b>	<b>RAC 1</b>	<b>Occurrences: 1</b>
----------------------	--------------	-----------------------

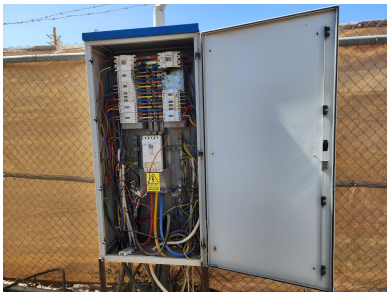
**Description:** Locking mechanism to SDP is damaged, allowing access to live parts.



<b>Location:</b>	South of reefer units.
<b>Category:</b>	Improper Use / Damaged
<b>Equipment:</b>	SDP
<b>Imminent:</b>	Yes
<b>Action:</b>	Makeshift lock installed, signs in place and personnel informed.
<b>Assigned To:</b>	O&M; Provider
<b>Code:</b>	British Standard 132: Protection against electric shock
<b>Status:</b>	Open

<b>Deficiency #2</b>	<b>RAC 2</b>	<b>Occurrences: 1</b>
----------------------	--------------	-----------------------

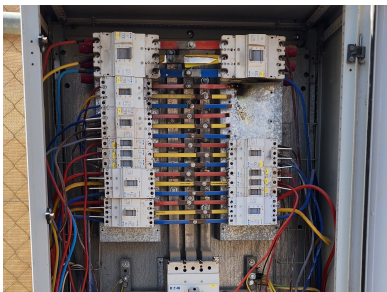
**Description:** SDP-2-1-E is unlisted.



<b>Location:</b>	South of reefer units.
<b>Category:</b>	Unlisted Equipment
<b>Equipment:</b>	SDP
<b>Imminent:</b>	No
<b>Action:</b>	N/A
<b>Assigned To:</b>	O&M; Provider
<b>Code:</b>	British Standard 511: Compliance with standards
<b>Status:</b>	Open

<b>Deficiency #3</b>	<b>RAC 2</b>	<b>Occurrences: 1</b>
----------------------	--------------	-----------------------

**Description:** Dead front is missing, allowing access to live parts.



<b>Location:</b>	Within SDP.
<b>Category:</b>	Improper Use / Damaged
<b>Equipment:</b>	SDP
<b>Imminent:</b>	No
<b>Action:</b>	N/A
<b>Assigned To:</b>	O&M; Provider
<b>Code:</b>	British Standard 132: Protection against electric shock
<b>Status:</b>	Open

<b>Deficiency #4</b>	<b>RAC 2</b>	<b>Occurrences: 1</b>
----------------------	--------------	-----------------------

**Description:** Ze reading of 0.85 Ohms exceeds the maximum permitted tolerance of 0.8 Ohms.



<b>Location:</b>	Within SDP.
<b>Category:</b>	Grounding and Bonding
<b>Equipment:</b>	SDP
<b>Imminent:</b>	No
<b>Action:</b>	N/A
<b>Assigned To:</b>	O&M; Provider
<b>Code:</b>	British Standard 132: Protection against electric shock
<b>Status:</b>	Open

<b>Deficiency #5</b>	<b>RAC 3</b>	<b>Occurrences: 1</b>
----------------------	--------------	-----------------------

**Description:** Exposed 3 phase single insulated conductors to outgoing circuit 12/TP.



<b>Location:</b>	Outgoing circuits 12/TP, bottom of SDP.
<b>Category:</b>	Poor Workmanship
<b>Equipment:</b>	SDP
<b>Imminent:</b>	No
<b>Action:</b>	N/A
<b>Assigned To:</b>	O&M; Provider
<b>Code:</b>	British Standard 642: Inspection
<b>Status:</b>	Open

<b>Deficiency #6</b>	<b>RAC 2</b>	<b>Occurrences: 6</b>
----------------------	--------------	-----------------------

**Description:** Circuit 1/TP - 16mm<sup>2</sup> conductors fed from 125A MCCB. Circuit 2/TP - 10mm<sup>2</sup> conductors fed from 63A MCCB. Circuit 4/L1 - 10mm<sup>2</sup> conductors fed from 63A MCCB. Circuit 4/L2 - 10mm<sup>2</sup> conductors fed from 63A MCCB. Circuit 4/L3 - 2.5mm<sup>2</sup> conductors fed from 32A MCCB. Circuit 7/TP - 10mm<sup>2</sup> conductors fed from 125A MCCB.



<b>Location:</b>	Within SDP.
<b>Category:</b>	Improper Use / Damaged
<b>Equipment:</b>	SDP
<b>Imminent:</b>	No
<b>Action:</b>	N/A
<b>Assigned To:</b>	O&M; Provider
<b>Code:</b>	British Standard Appx 4: Current carrying capacities and voltage drop for cables
<b>Status:</b>	Open

<b>Deficiency #7</b>	<b>RAC 2</b>	<b>Occurrences: 4</b>
----------------------	--------------	-----------------------

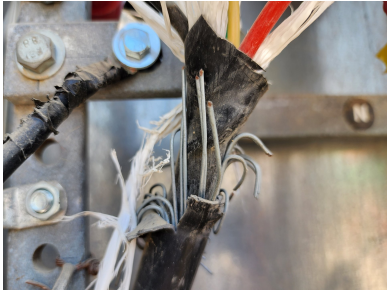
**Description:** Neutral and CPC conductors have been twisted around the neutral and MET bars to form a connection.



<b>Location:</b>	Within SDP, circuits 4/L3 and 11/L3.
<b>Category:</b>	Improper Terminations
<b>Equipment:</b>	SDP
<b>Imminent:</b>	No
<b>Action:</b>	N/A
<b>Assigned To:</b>	O&M; Provider
<b>Code:</b>	British Standard 526: Electrical connections
<b>Status:</b>	Open

<b>Deficiency #8</b>	<b>RAC 3</b>	<b>Occurrences: 3</b>
----------------------	--------------	-----------------------

**Description:** Outgoing circuits 5/TP, 11/L3 and 12/TP have not been glanded.



<b>Location:</b>	Outgoing circuits 5/TP, 11/L3 and 12/TP.
<b>Category:</b>	Poor Workmanship
<b>Equipment:</b>	SDP
<b>Imminent:</b>	No
<b>Action:</b>	N/A
<b>Assigned To:</b>	O&M; Provider
<b>Code:</b>	British Standard 510: Common rules
<b>Status:</b>	Open

## Inspection-Report\_TFSAFE\_Full\_ALQ26\_SDP-2-1-E\_113\_10-06-26\_1-8

<b>Base Location</b>	Al Quwayrah	<b>Date:</b>	10-JUN-2026
<b>Base Code</b>	ALQ26	<b>Team #:</b>	113
<b>Building #</b>	SDP-2-1-E	<b>System Voltage</b>	230/400
<b>Building Type</b>	SDP	<b>Inspection Phase</b>	Full Inspection
<b>Previous Report #:</b>	N/A	<b>Work Order:</b>	TFS-ALQ26-2026-00008

**Summary of Findings:**

x 1 SDP. x 2 125A 3P MCCB's. x 2 100A 3P MCCB's. x 4 63A 3P MCCB's. x 2 32A 3P MCCB's. x 3 32A 1P MCCB's. x 1 20A 1P MCCB. All cabling, terminations and earthing arrangements. Multiple outgoing circuits have not been crimped. Earth path is by way of steel wire armouring and a 35mm ground electrode conductor.

**Signatures:**

**Inspector 1: Jon Sharp**

Date: 12-JUN-2026

**Inspector 2: Giles Vincent-Edwards**

Date: 12-JUN-2026

**QC Reviewer: David Forbes**

Date: 12-JUN-2026